

Talk to your doctor about the Calypso System

It is important for you that

- All the necessary radiation gets to your tumor
- All possible precautions available are taken to avoid irradiating the bladder and rectum
- Your doctor knows exactly where the tumor is at all times

Ask about the Calypso System today

To find out whether the Calypso 4D Localization System is right for you, ask your doctor today.



Calypso Medical Technologies, Inc.
2101 4th Avenue, Suite 500 | Seattle, WA 98121 | USA
1-877-345-4GPS | 1-877-345-4477



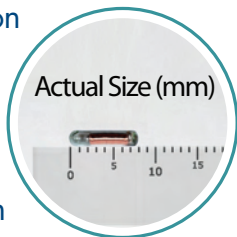
What You Need to Know About Prostate Motion During Radiation Therapy

© 2009 Calypso Medical Technologies, Inc. All rights reserved.

Calypso and Beacon are registered trademarks of Calypso Medical Technologies, Inc.

Printed in the USA.

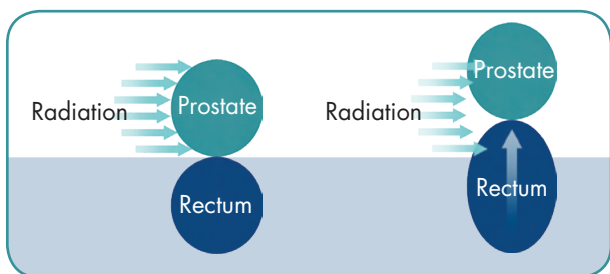
The Calypso® 4D Localization System is different from other methods to prepare you for radiation treatment. The Calypso System uses radiofrequency waves which allow very accurate alignment of your prostate before each treatment session. It can also be used to monitor the position of the prostate at all times during treatment delivery.



Organ motion and radiation therapy

If you have prostate cancer and your doctor has prescribed radiation therapy, there are some important things you should know.

- Your organs naturally move during treatment
- Your doctor can't predict which way—or how much—your organs will move
- When your organs move
 - The tumor may not get the right amount of radiation
 - Other nearby organs may receive radiation they shouldn't get

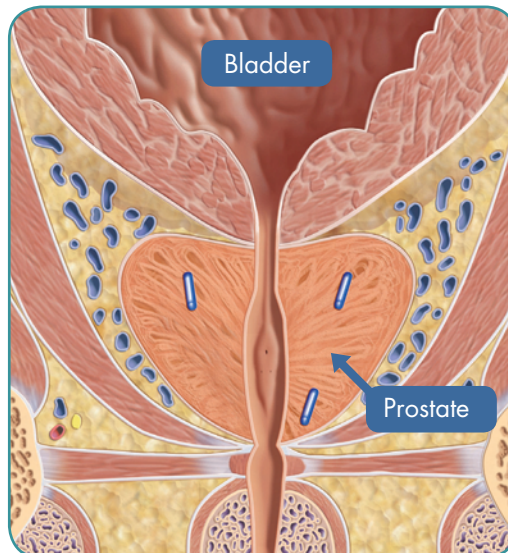


Fortunately, the Calypso System can help your doctor know when the prostate is not aligned with the radiation beam during treatment.

How it works

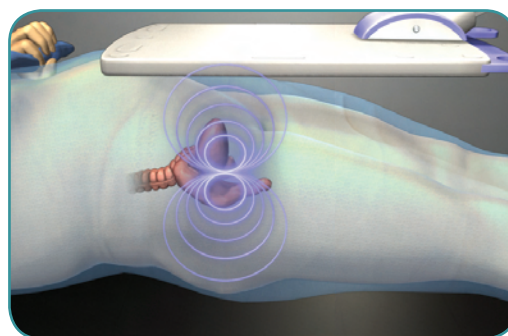
1. Three tiny Beacon electromagnetic transponders are implanted into your prostate

In an outpatient procedure, like a biopsy, Beacon® transponders are implanted into your prostate. Each transponder is about as small as a grain of rice.



2. The system excites the Beacon transponders

The Beacon transponders communicate with the Calypso System using safe radiofrequency waves.



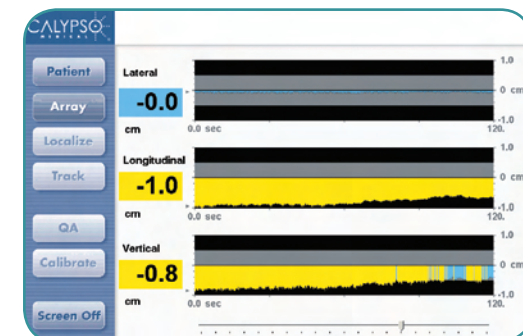
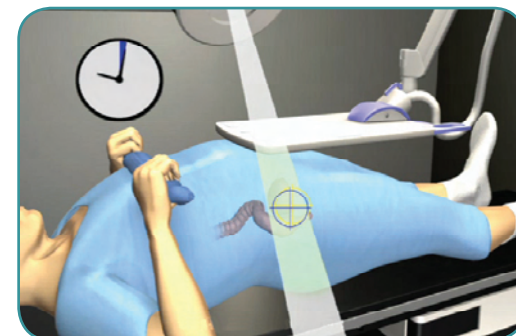
Activate transponders



Transponders send signals back

3. Your prostate is monitored during treatment

The Calypso System shows exactly where the tumor is all the time so your doctor can make quick, important decisions about your care.



A display shows the position of your prostate continuously. When the prostate is out of position, the graph is color coded to alert the therapist. This is an actual patient record that demonstrates a prostate that has drifted out of alignment by 1 cm (yellow indicates out-of-tolerance).